



StEER
 STRUCTURAL
 EXTREME EVENTS
 RECONNAISSANCE

Accessing Satellite Imagery in Fulcrum

Quick Reference Sheet

Version 1.2
 Released October 2, 2024

BROWSER INTERFACE

Login to Fulcrum at www.fulcrumapp.com and go to the StEER Unified App_v1. Click on the view records icon to access the data.

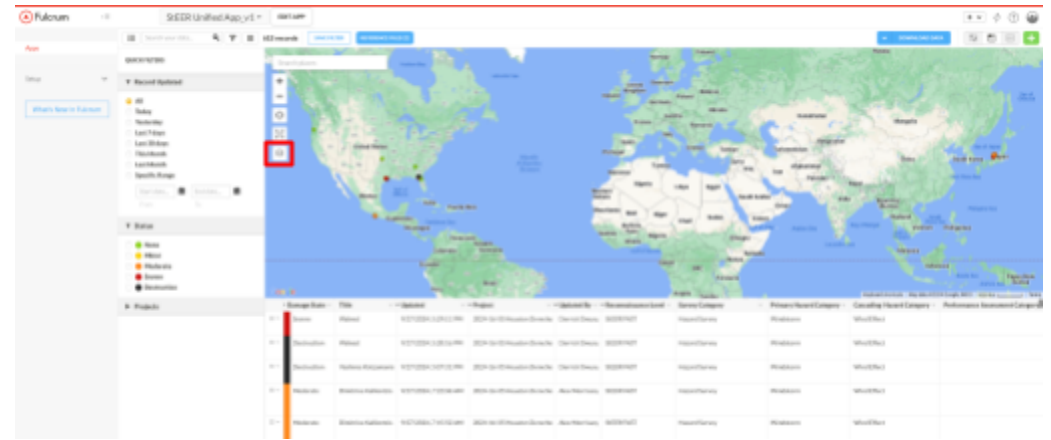
The screenshot shows a list of four StEER apps in the Fulcrum interface:

- StEER Unified App_v1**: Unified App for BA. 635 records | Last activity 4 days ago. The 'VIEW RECORDS' button is highlighted with a red box.
- StEER Earthquake App_v2**: StEER Earthquake App_v2 incorporates tiered performance assessment framework including Basic Assessment (BA), Load Path Assessment (LPA), and Direct Component Assessment (DCA). 433 records | Last activity 12 days ago.
- [Training] StEER Earthquake Rapid Evaluation Form**: Duplicate of the StEER Earthquake Rapid Evaluation Form set up for training purposes. 162 records | Last activity 19 days ago.
- StEER Building - US (windstorm)**: App for documenting performance of buildings following a severe windstorm event. Includes a 'shared' tag.

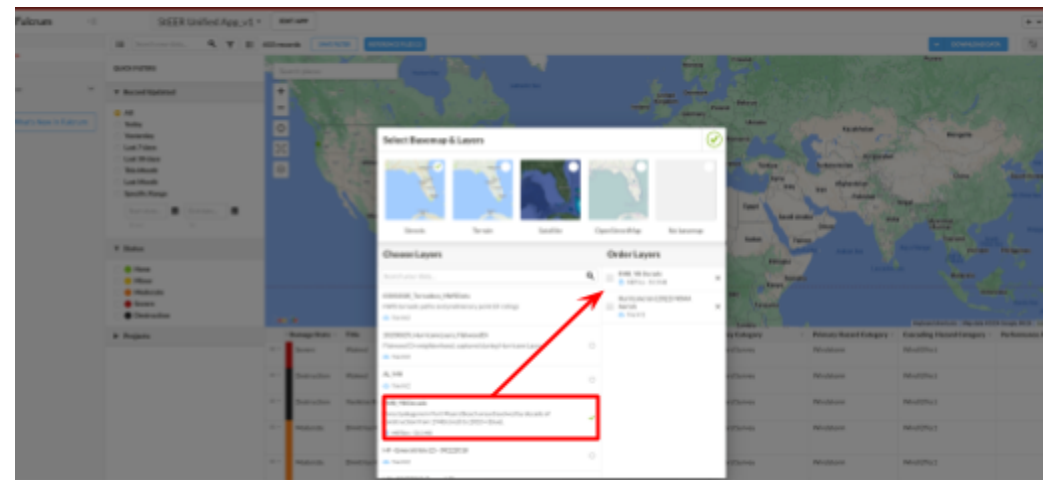


StEER
 STRUCTURAL
 EXTREME EVENTS
 RECONNAISSANCE

In the map view, click on the layer stack icon on the left hand side of the map.



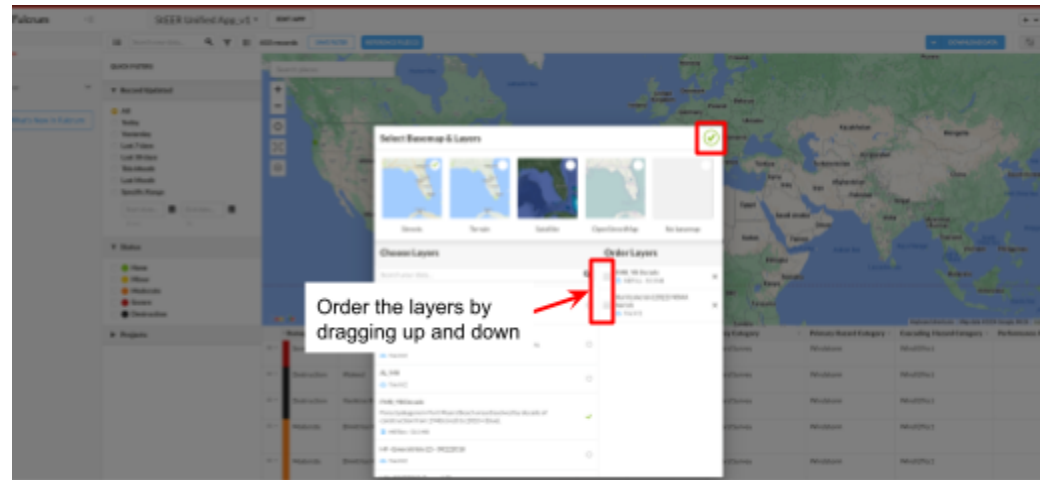
This will bring up your basemap and layers options. Look at the list of layers and make your selection.



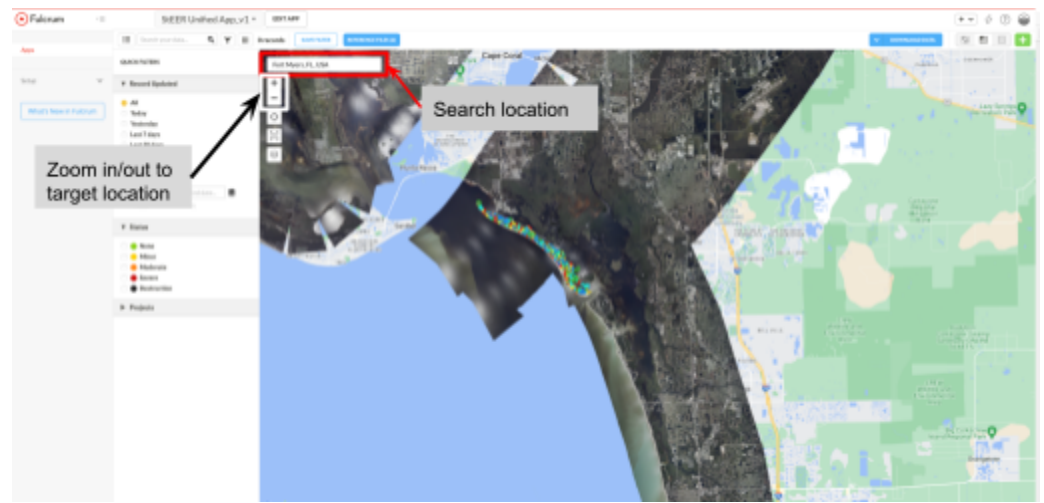
StEER
STRUCTURAL
EXTREME EVENTS
RECONNAISSANCE

Quick Reference Sheet: Fulcrum Enrollment
Building Resilience through Reconnaissance
Version 1.2 | Released October 2, 2024

After selecting a layer(s), it/they should appear on the right side where they can be ordered. When you have the layer(s) ordered as you desire, click the check box in the upper right.



This will now load the layer in. Note that some of the satellite imagery is confined to a small area and may have clipping (black) in areas outside the imaging domain. It is advisable to type the name of the area imaged in the search bar in the upper right and hit return. This will center the display over the imaged area, allowing you to zoom in further to interact with the satellite data.



StEER
STRUCTURAL
EXTREME EVENTS
RECONNAISSANCE

Quick Reference Sheet: Fulcrum Enrollment
Building Resilience through Reconnaissance
Version 1.2 | Released October 2, 2024

Once you zoom into the target area, you will be able to see the detailed layer.

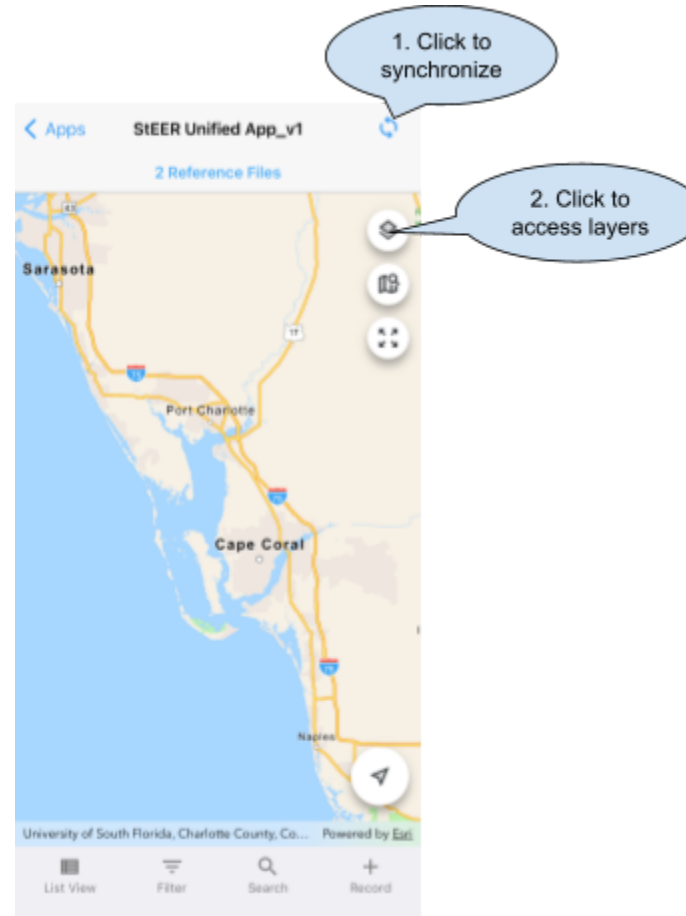


StEER
STRUCTURAL
EXTREME EVENTS
RECONNAISSANCE

Quick Reference Sheet: Fulcrum Enrollment
Building Resilience through Reconnaissance
Version 1.2 | Released October 2, 2024

MOBILE APP INTERFACE

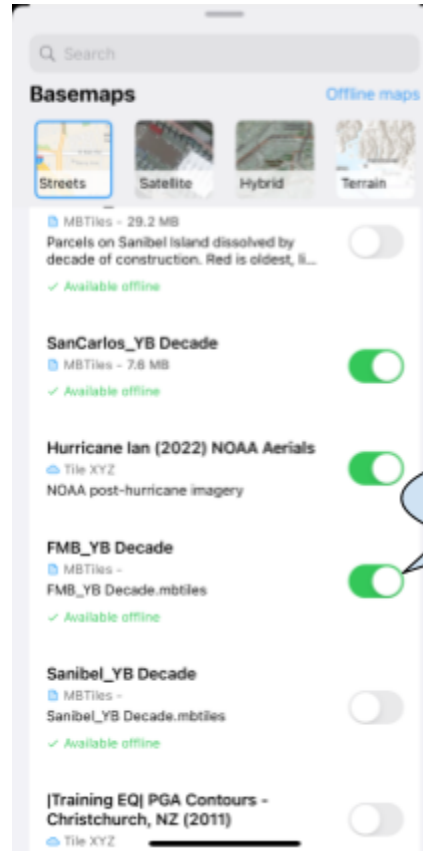
1. Make sure your Fulcrum App is synchronized by clicking the circular arrow pair in the upper right.
2. After synchronizing, click on the layer stack icon in the upper right. This will display the list of all available satellite imagery StEER has pre-loaded as layers in Fulcrum.



StEER
STRUCTURAL
EXTREME EVENTS
RECONNAISSANCE

Quick Reference Sheet: Fulcrum Enrollment
Building Resilience through Reconnaissance
Version 1.2 | Released October 2, 2024

3. Swipe to select the layer(s) of interest. Swipe down when you are done with layers selection.



4. This will take you back to the map interface. If desired, click on the Location search bar icon on the lower right to enter the location of the imagery. Doing so will navigate your display to the location of the selected satellite image now visible as an overlay.



StEER
STRUCTURAL
EXTREME EVENTS
RECONNAISSANCE

Quick Reference Sheet: Fulcrum Enrollment
Building Resilience through Reconnaissance
Version 1.2 | Released October 2, 2024